

Texas State Highway 290 Retaining Wall

QUIKRETE® Shotcrete MS - Fiber Reinforced
Ozona, TX



PROJECT DESCRIPTION:

Built in 1992, Highway 290 traverses the rugged and rural mountains of West Texas including a stretch near Ozona, TX that features a natural stone retaining wall that deteriorated over time. The Texas Department of Transportation (TxDOT) not only wanted to make this roadway safe by rehabilitating the stone wall, but also preserve the beauty of the mountainscape in the process. Members of the GEO Stabilization crew spray-applied QUIKRETE® Shotcrete MS - Fiber Reinforced over rebar matting affixed to the stone wall from as much as 30 feet below the roadway. Before the application hardened, artisans then shaped and sculpted the shotcrete to capture the look and feel of the original natural stone retaining wall.

QUIKRETE® Shotcrete MS is a single component Micro Silica enhanced repair material that achieves more than 9,000 PSI at 28 days, and features very low rebound and permeability characteristics. Available in 3000 lb bulk bags and 50 lb or 80 lb paper bags.

CONTRACTOR: Geo Stabilization

QUIKRETE® PRODUCTS:

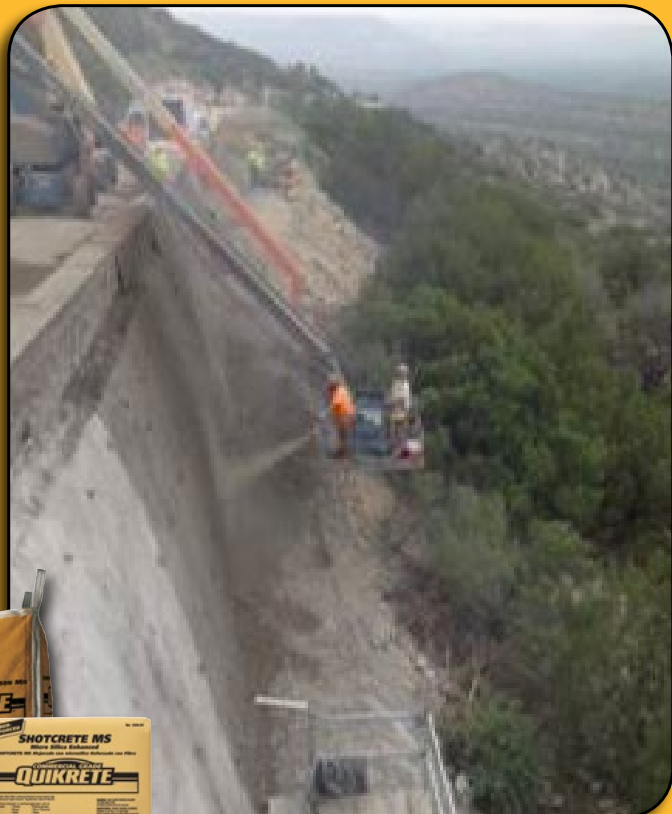
- 3,000 lb Shotcrete MS - Fiber Reinforced:
362 bulk bags

PROJECT START DATE:

March 2015

PROJECT COMPLETION DATE:

August 2015



QUIKRETE® Shotcrete MS - Fiber Reinforced >>

