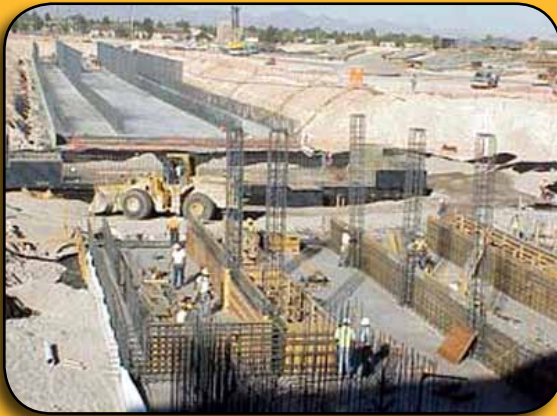


PROJECT > Las Vegas McCarran International Airport

FastSet™ DOT Mix - Extended
Las Vegas, NV



PROJECT DESCRIPTION:

McCarran International Airport is the 22nd busiest airport in the world for passenger traffic and 9th in the world for takeoffs and landings. So when the new Terminal 3 runway lights needed to be installed, closing down runways and taxiways for extended periods was not an option.

QUIKRETE® FastSet™ DOT Mix - Extended was used to encapsulate the electrical conduit and fill the 36" deep by 36" diameter lighting structures bases with minimal down time. FastSet™ DOT Mix achieved over 4,500 PSI in just 3 hours, allowing

the runways to be open before flights resumed in the morning.

QUIKRETE® FastSet™ DOT Mix - Extended is a rapid hardening, fiber reinforced repair material that is pre-extended with coarse aggregate making it ideal for use in applications from 1 1/2" to 48" thick. FastSet™ DOT Mix is formulated to provide 20 - 30 minutes of working time to allow adequate time for mixing and placement. The material exceeds 3000 PSI compressive strength at 1.5 hours, 4,500 PSI at 3 hours and more than 10,000 PSI at 28 days.

GENERAL CONTRACTOR:

Royal Electric

PROJECT START DATE:

March 2011

QUIKRETE® PRODUCTS USED:

- 80 lb FastSet™ DOT Mix - Extended :
1,224 bags

PROJECT COMPLETION DATE:

September 2012



QUIKRETE® FastSet™ DOT Mix - Extended >>
Product No. 1244-80

