

### Required Tools & Materials

---

- QUIKRETE® Hydraulic Water-Stop Cement or QUIKRETE® Quick-Setting Cement for larger areas
- Hammer
- Chisel or keyhole saw
- Mason's Trowel

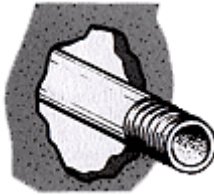
### Step by Step

---

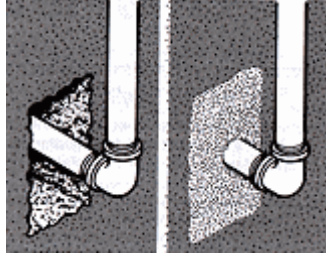
The cut-out opening around basement pipes are prime areas for moisture to enter your home, not to mention insects and vermin. To keep these unwelcome visitors out of your home, seal around all pipes with QUIKRETE® Hydraulic Water-Stop Cement or QUIKRETE® Quick-Setting Cement. They are specially formulated so they can be sculpted to fit securely around pipes for an effective, watertight seal.

#### Sealing

1. Square the edges of the hole with a hammer and chisel.



2. Be sure the edges of the hole are free of dirt and other loose material, then dampen the area slightly.
3. Mix the QUIKRETE® Hydraulic Water-Stop Cement and make the initial application with a mason's trowel, filling in the hole generously.
4. After the initial set, work the patch with the edge of the trowel to firm up the cement around the pipe.



**Note:** If your basement is warm and dry, it is best to keep the patch moist for 24 hours by covering it with polyethylene film.